



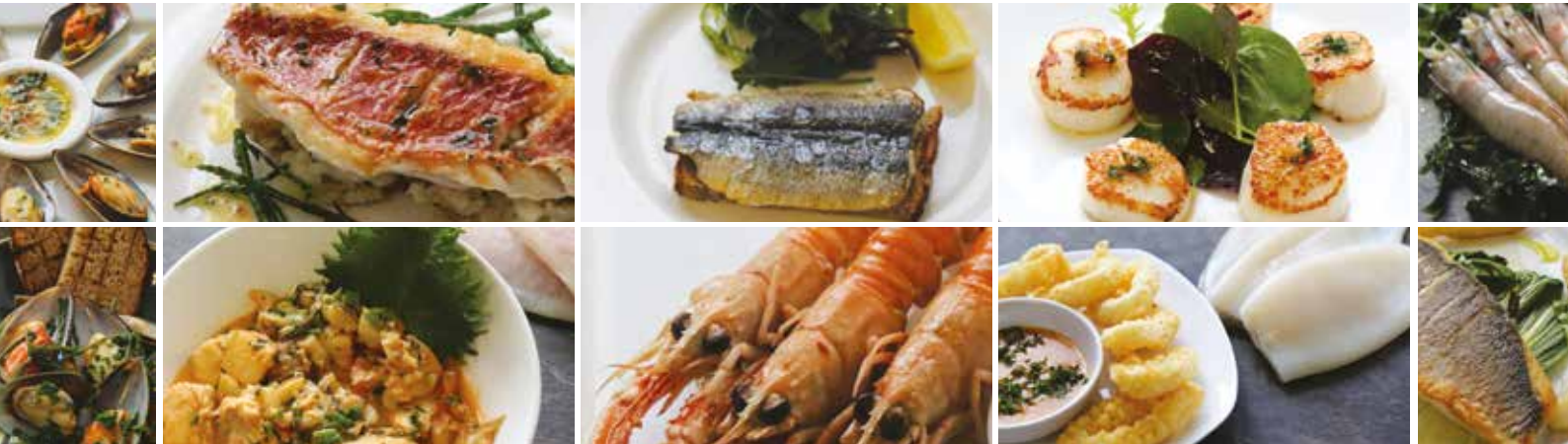
# FROZEN RANGE

Product Brochure  
2018

# WELCOME

We are fresh fish specialists, but we also have an extensive range of coated, deli, and frozen lines. This is alongside chef essential items such as cooking wines, stocks, and sauces

This brochure showcases our Frozen Range for 2018.  
For more information and prices or if you would also like a copy of our coated or specialist & deli brochure, please contact your account manager.



## CONTENTS

| TITLE                                   |   | PAGE           |
|---|---|----------------|
| <b>White Fish</b>                       | <i>Cod, Coley, Haddock, Hake, Halibut, Hoki, Lemon Sole, Plaice, Pollock, Seabass.</i>  | <b>4 - 7</b>   |
| <b>Shellfish</b>                        | <i>Abalone, Clams, Cockles, Crab, Crayfish, Langoustine, Scampi, Lobster, Mussel, Oyster, Prawn, Scallop, Shrimp, Whelks.</i> | <b>8 - 14</b>  |
| <b>Smoked</b>                           | <i>Cod, Haddock, Halibut, Kippers, Mackerel, Tuna.</i>  | <b>15</b>      |
| <b>Cephalopods</b>                      | <i>Cuttlefish, Octopus, Squid.</i>  | <b>15 - 16</b> |
| <b>Game Fish &amp; Exotics</b>          | <i>Kingfish, Mahi-Mahi, Red Snapper, Swordfish, Tuna, Yellowtail.</i>   | <b>16</b>      |
| <b>Other Fish</b>                       | <i>Anchovies, Barramundi, Herring, John Dory, Monkfish, Red Mullet, Salmon, Tilapia, Whitebait.</i>                           | <b>17</b>      |
| <b>Miscellaneous</b>                    | <i>Frogs Legs, Seafood Cocktail, Snails In Garlic.</i>  | <b>17</b>      |
| <b>MSC &amp; ASC Certified Products</b> |   | <b>18 - 19</b> |



(Red Mullet)

# WHITE FISH

---

## COD

| DESCRIPTION  | CODE          |
|--|---------------|
| Cod: Fillets IQF 110-140Gm (30 Per Case)               | 08CODI1E8W    |
| Cod: Fillets IQF 140-170Gm (25 Per Case)               | 08CODI4E8R    |
| Cod: Fillets IQF 170-200Gm (20 Per Case)               | 08CODI7E8N    |
| Cod: Fillets IQF 200-230Gm (20 Per Case)               | 08COD20E8N    |
| Cod: Fillets IQF 230-280Gm (15 Per Case)               | 08COD23E8I    |
| Cod: Fillets IQF 280-340Gm (12 Per Case)               | 08COD28E8F    |
| Cod: Black Whole (Kg)                                  | 08CODBL00K0A  |
| Cod: Fillets Fas Skin on 230-450Gm (6.81Kg Nett Block) | 08CODFA23E5U  |
| Cod: Fillets Fas Skin on 450-909Gm (6.81Kg Nett Block) | 08CODFA45E5U  |
| Cod: Fillets Fas Skinned 230-450Gm (6.81Kg Nett Block) | 08CODFAS23E5U |
| Cod: Fillets Fas Skinned 450-909Gm (6.81Kg Nett Block) | 08CODFAS45E5U |
| Cod: Loin - Skinless 140-170Gm (10 Per Case)           | 08CODLI4E8D   |
| Cod: Loin - Skinless 170-200Gm (10 Per Case)           | 08CODLI7E8D   |
| Cod: Fillets IQF Skinned & PB 110-140Gm (30 Per Case)  | 08CODSKI1E8W  |
| Cod: Fillets IQF Skinned & PB 140-170Gm (25 Per Case)  | 08CODSKI4E8R  |
| Cod: Fillets IQF Skinned & PB 170-200Gm (20 Per Case)  | 08CODSKI7E8N  |
| Cod: Fillets IQF Skinned & PB 200-230Gm (20 Per Case)  | 08CODSK20E8N  |
| Cod: Fillets IQF Skinned & PB 230-280Gm (15 Per Case)  | 08CODSK23E8I  |
| Cod: Fillets IQF Skinned & PB 280-340Gm (12 Per Case)  | 08CODSK28E8F  |
| Cod: Cheeks (1Kg Nett Pack)                            | 08CODC00E3Q   |

## COLEY

| DESCRIPTION                                    | CODE         |
|--|--------------|
| Coley: Fillet 140-230Gm (3.63Kg Nett Case)     | 08COLI4E5M   |
| Coley: Fillet - Fas 450-900Gm (9Kg Nett Block) | 08COLFA45E5X |

# WHITE FISH

---

## HADDOCK

| DESCRIPTION  | CODE          |
|--|---------------|
| Haddock: Fillet 110-140Gm (30 Per Case)  | 08HAD11E8W    |
| Haddock: Fillet 140-170Gm (25 Per Case)  | 08HAD14E8R    |
| Haddock: Fillet 170-200Gm (20 Per Case)  | 08HAD17E8N    |
| Haddock: Fillet 200 - 230Gm (20 Per Case)  | 08HAD20E8N    |
| Haddock: Fillet 230-280Gm (15 Per Case)  | 08HAD23E8I    |
| Haddock: Fillet 280-340Gm (12 Per Case)  | 08HAD28E8F    |
| Haddock: Fillet - Frozen At Sea Skin On 230-454Gm (6.8Kg Nett Block)<br><i>*Special order only</i>   | 08HADFA23E5U  |
| Haddock: Fillet - Frozen At Sea Skin On 450-909Gm (6.81Kg Nett Block)<br><i>*Special order only</i>  | 08HADFA45E6F  |
| Haddock: Fillet - Frozen At Sea Skinless 140-230Gm (6.8Kg Nett Block)<br><i>*Special order only</i>  | 08HADFAS14E5U |
| Haddock: Fillet - Frozen At Sea Skinless 230-454Gm (6.8Kg Nett Block )<br><i>*Special order only</i> | 08HADFAS23E5U |
| Haddock: Fillet Skinned & Boned 110-140Gm (30 Per Case)  | 08HADS11E8W   |
| Haddock: Fillet Skinned & Boned 140-170Gm (25 Per Case)  | 08HADS14E8R   |
| Haddock: Fillet Skinned & Boned 170-200Gm (20 Per Case)  | 08HADS17E8N   |
| Haddock: Fillet Skinned & Boned 200-230Gm (20 Per Case)  | 08HADS20E8N   |
| Haddock: Fillet Skinned & Boned 230-280Gm (15 Per Case)  | 08HADS23E8I   |
| Haddock: Fillet Skinned & Boned 280-340Gm (12 Per Case)  | 08HADS28E8F   |
| Haddock: Loins Skinned & Boned 110 - 140Gm (30 Per Case) <i>*Special order only</i>                  | 08HADSL11E8W  |

## HAKE

| DESCRIPTION   | CODE         |
|---|--------------|
| Hake: Fillet 140-170Gm (3.63Gm Nett Case)               | 08HAK14E5M   |
| Hake: Fillet 140-170Gm (25 Per Case)                    | 08HAK14E8R   |
| Hake: Fillet 170-200Gm (3.63Gm Nett Case)               | 08HAK17E5M   |
| Hake: Fillet 170-200Gm (10 Per Case)                    | 08HAK17E8D   |
| Hake: Fillet Frozen At Sea 260-400Gm (4.54Kg Nett Case) | 08HAKFA25E5M |
| Hake: Fillet 200-230Gm (3.63Kg Nett Case)               | 08HAKS20E5M  |
| Hake: Fillet 230-280Gm (3.63Kg Nett Case)               | 08HAKS23E5M  |

# WHITE FISH

---

## HALIBUT

| DESCRIPTION  | CODE       |
|--|------------|
| Halibut: Supreme - Skinless & Boned 170-230Gm (10 Per Case)  | 08HAL17E8D |
| Halibut: Supreme - Skinless & Boned 230 -280Gm (10 Per Case) | 08HAL23E8D |
| Halibut: Steak 230-280Gm (4.08Kg Nett Case)                  | 08HAL23E5M |

## HOKI

| DESCRIPTION  | CODE        |
|--|-------------|
| Hoki: Fillet IQF - Skinless & Boned 110-140Gm (3.63Gm Nett Case) | 08HOK11E5M  |
| Hoki: Fillet IQF - Skinless & Boned 140-170GM (3.63Kg Nett Case) | 08HOKS14E8R |
| Hoki: Fillet IQF - Skinless & Boned 170-220Gm (3.63Kg Nett Case) | 08HOK17E5M  |

## LEMON SOLE

| DESCRIPTION                                    | CODE        |
|--|-------------|
| Lemon Sole: Fillet IQF 140-170Gm (25 Per Case) | 08SOLL14E8R |
| Lemon Sole: Fillet IQF 170-200Gm (20 Per Case) | 08SOLL17E8N |
| Lemon Sole: Fillet IQF 230-280Gm (15 Per Case) | 08SOLL23E8I |

## PLAICE

| DESCRIPTION                                | CODE       |
|--|------------|
| Plaice: Fillet IQF 140-170Gm (25 Per Case) | 08PLA14E8R |
| Plaice: Fillet IQF 170-200Gm (20 Per Case) | 08PLA17E8N |
| Plaice: Fillet IQF 200-230Gm (20 Per Case) | 08PLA20E8N |
| Plaice: Fillet IQF 230-280Gm (15 Per Case) | 08PLA23E8I |
| Plaice: Fillet IQF 280-340Gm (12 Per Case) | 08PLA28E8F |

# WHITE FISH

---

## POLLOCK

DESCRIPTION

CODE

|   |             |
|---|-------------|
| Pollock: Fillet 110-140Gm Skinned & Boned (30 Per Case) | 08POLI1E8W  |
| Pollock: Fillet 140-170Gm Skinned & Boned (25 Per Case) | 08POLSI4E8R |
| Pollock: Fillet 170-200Gm Skinned & Boned (20 Per Case) | 08POLI7E8N  |
| Pollock: Fillet 200-230Gm Skinned & Boned (20 Per Case) | 08POL20E8N  |
| Pollock: Fillet 230-280Gm Skinned & Boned (15 Per Case) | 08POL23E8I  |

## SEABASS

DESCRIPTION

CODE

|   |            |
|---|------------|
| Seabass: Fillet 80 - 120Gm (800Gm Nett Pack)  | 08BAS80E3Q |
| Seabass: Fillet 100-140Gm (800Gm Nett Pack)   | 08BAS11E3Q |
| Seabass: Fillet 140-180Gm (800Gm Nett Pack)   | 08BAS14E3Q |
| Seabass: Fillet 180 - 200Gm (800Gm Nett Pack) | 08BAS18E3Q |
| Seabass: Chilean (Kg)                         | 08BAS00K0A |



(Seabass)

# SHELLFISH

---

| DESCRIPTION   | CODE          |
|---|---------------|
| Abalone: IQF (1Kg Nett Pack)                        | 08ABA00E3Q    |
| Clams: Meat - Baby (800Gm Nett Bag)                 | 08CLAB00E3Q   |
| Clams: Whole Shell (1Kg Nett Pack)                  | 08CLAF00E3Q   |
| Clams: Half Shell (1Kg Nett Pack)                   | 08CLAH00E3Q   |
| Cockles: Meat (340Gm Nett Bag)                      | 08COC00E2K    |
| Cockles: Meat (1Kg Nett Bag)                        | 08COC00E3Q    |
| Crab: Claws - Double Pincer (272Gm Nett Pack)       | 08CRACLD00E2K |
| Crab: Claws - Single Pincer (272Gm Nett Pack)       | 08CRACLS00E2K |
| Crab: Meat 50/50 (454Gm Nett Pack)                  | 08CRAFF00E2K  |
| Crab: Meat White (454Gm Nett Pack)                  | 08CRAWH00E2K  |
| Crab: Meat King - (Kilo) <i>*Special order only</i> | 08CRAK00K0A   |
| Crab: Dressed 110-140Gm (Each)                      | 08CRADR11E0A  |
| Crab: Dressed 140-170Gm (Each)                      | 08CRADR14E0A  |
| Crab: Dressed 170-200Gm (Each)                      | 08CRADR17E0A  |
| Crab: Snow Sections Cooked (9.08Kg Nett Case)       | 08CRASC00E6D  |
| Crab: Bodies (Kg)                                   | 08CRAB00K0A   |
| Crab: Soft Shell - Medium (24 Per Case)             | 08CRAS1E8Q    |
| Crab: Soft Shell - Hotels (18 Per Case)             | 08CRAS2E8L    |
| Crab: Soft Shell Prime (14 Per Case)                | 08CRAS3E8H    |
| Crab: Soft Shell - Jumbo (12 Per Case)              | 08CRAS4E8F    |
| Ocean Stix Premium (1Kg Nett Box)                   | 08CRASTP00E3Q |
| Crayfish: Tails - Cooked & Peeled (800Gm Nett Pack) | 08CRAY00E3Q   |
| Ecrevisse: (1Kg Nett Pack)                          | 08CRAY00K0A   |



# SHELLFISH

---

## DESCRIPTION

## CODE

Langoustine: 4-7 (700Gm Nett Box)

08LAN4E3Q

Langoustine: 8-12 (700Gm Nett Box)

08LAN8E3Q

Langoustine: 13-16 (700Gm Nett Box)

08LAN13E3Q

Langoustine: 16-20 (700Gm Nett Box)

08LAN16E3Q

Langoustine: 21-30 (700Gm Nett Box)

08LAN21E3Q

Langoustine: Heads & Claws (Kg)

08LANH00K0A

Scampi: Peeled Gourmet 30-45 (295Gm Nett Pack)

08SCAPG30E2K

Scampi: Peeled Jumbo 20-30 (295Gm Nett Pack)

08SCAPJ20E2K



(Langoustine)

# SHELLFISH

| DESCRIPTION  | CODE          |
|--|---------------|
| Lobster: In Brine 350Gm Nett (Each)  | 08LOBLB00E2B  |
| Lobster: Meat (320Gm Nett Pack)  | 08LOBM00E1X   |
| Lobster: Claw & Knuckle Meat - Cooked (454Gm Nett Pack) <i>*Special order only</i> | 08LOBMCO00E2K |
| Lobster: Tail - Shell On 110-170Gm (Kg)  | 08LOBT11K0A   |
| Lobster: Tail - Shell On 170-230Gm (Kg)  | 08LOBT17K0A   |
| Lobster: Whole Cooked 340-440Gm (Kg)   | 08LOBW34K05   |
| Lobster: Bodies DOA - Native UK (Kg)   | 08LOBB00K0A   |
| Lobster: Bodies DOA - Canada & USA (Kg)  | 08LOBBC00K0A  |
| Lobster: Raw Slipper - Half Cut Cleaned - 50-70Gm (1Kg Nett Pack)                  | 08LOBRPW00E3Q |
| Mussel: Whole Shell (1Kg Nett Pack)  | 08MUSBL00E3Q  |
| Mussel: Green Lip Half Shell (1Kg Nett Pack)                                       | 08MUSHN00E3Q  |
| Mussel: Meat (340Gm Nett Bag)  | 08MUSM00E2K   |
| Mussel: Meat (900Gm Nett Bag)  | 08MUSM00E3Q   |
| Mussel: Moules Marinieres (450Gm Nett Pack)  | 08MUSMM00E2J  |



(Green Lip Mussels)

# SHELLFISH

| DESCRIPTION  | CODE            |
|--|-----------------|
| Prawn: King - BAP - Tail On - Cooked & Peeled 26-30 (700Gm Nett Bag)                                   | 08PRACBPBP26E3Q |
| Prawn: King - BAP - Tail On - Cooked & Peeled 31-40 (700Gm Nett Bag)                                   | 08PRACBPBP31E3Q |
| Prawn: King - BAP - Tail Off - Cooked & Peeled 31-40 (700Gm Nett Bag)                                  | 08PRACPOBP31E3Q |
| Prawn: King - BAP - Raw Peeled & Deveined 21-25 IQF (700Gm Nett Pack)                                  | 08PRADVBP21E3Q  |
| Prawn: King - BAP - Raw Deveined - Tail On - IQF 21-25 (700Gm Nett Pack)                               | 08PRADVVPF21E3Q |
| Prawn:Vannamei - Raw Peeled & Deveined 31-40 (900Gm Nett Block)  | 08PRADVBTB31E3M |
| Prawn:Vannamei - Shell On - Raw - Headless 26-30 (900Gm Nett Block)                                    | 08PRAHLB26E3M   |
| Prawn:Vannamei - Shell On - Raw - Headless 31-40 (900Gm Nett Block)                                    | 08PRAHLB31E3M   |
| Prawn: Black Tiger - BAP - Head On - Raw 4-6 (600Gm Nett Box)<br><i>*Extensively farmed in Vietnam</i> | 08PRAHOBP4E3Q   |
| Prawn: Black Tiger - BAP - Head On - Raw 6-8 (600Gm Nett Box)<br><i>*Extensively farmed in Vietnam</i> | 08PRAHOBP6E3Q   |
| Prawn: Black Tiger - BAP - Head On - Raw 8-12 (600Gm Nett Box)   | 08PRAHOBP8E3Q   |
| Prawn: Black Tiger - BAP - Head On - Raw 13-15 (600Gm Nett Box)  | 08PRAHOBP13E3Q  |
| Prawn: Black Tiger - BAP - Head On - Raw 16-20 (600Gm Nett Box)  | 08PRAHOBP16E3Q  |
| Prawn: Black Tiger - BAP - Head On - Raw 21-30 (600Gm Nett Box)  | 08PRAHOBP21E3Q  |



# SHELLFISH

| DESCRIPTION   | CODE            |
|---|-----------------|
| Prawn: King - Headless - Shell On - Raw 13-15 IQF (440Gm Nett Bag)        | 08PRAKRH13E3K   |
| Prawn: King - Headless - Shell On - Raw 16-20 IQF (440Gm Nett Bag)        | 08PRAKRH16E3K   |
| Prawn: King - Headless - Shell On - Raw U5 IQF (440Gm Nett Pack)          | 08PRAKRH5E3K    |
| Prawn: King - Headless - Shell On - Raw 6-8 IQF (440Gm Nett Bag)          | 08PRAKRH6E3K    |
| Prawn: King - Headless - Shell On - Raw 8-12 IQF (440Gm Nett Bag)         | 08PRAKRH8E3K    |
| Prawn: King - Cooked Head & Shell On 10-20 Per Kg (2Kg Nett Pack)         | 08PRAMED10113   |
| Prawn: King - Cooked Head & Shell On 40-60 Per Kg (1.80Kg Nett Pack)      | 08PRAMED40113   |
| Prawn: King - Cooked Head & Shell On 40-60 Per Kg (900Gm Nett Pack)       | 08PRAMED140113  |
| Prawn: King - Cooked Head & Shell On 20-30 Per Kg (1.80Kg Nett Pack)      | 08PRAMED20113   |
| Prawn: King - Cooked Head & Shell On 20-30 Per Kg (900Gm Nett Pack)       | 08PRAMED21113   |
| Prawn: King - Cooked Head & Shell On 30-40 Per Kg (1.80Kg Nett Pack)      | 08PRAMED30113   |
| Prawn: King - Cooked Head & Shell On 30-40 Per Kg (900Gm Nett Pack)       | 08PRAMED31113   |
| Prawn: King - BAP - IQF Raw Peeled Butterfly 21-25 (810Gm Nett Bag)       | 08PRARPBB21E3M  |
| Prawn: King - BAP - Tail On - Raw Peeled & Deveined 16-20 (700Gm Nett)    | 08PRARPDTO16E2Y |
| Prawn: BAP - King Skewers - Raw (700Gm Nett Pack)                         | 08PRASKBP60E3Q  |
| Prawn: King - BAP - Raw Peeled & Deveined 8-12 (700Gm Nett Pack)          | 08PRDV0124      |
| Prawn: King - BAP - Raw Peeled & Deveined 13-15 (700Gm Nett Pack)         | 08PRDVKV00124   |
| Prawn: King - BAP - Raw Peeled & Deveined 16-20 (700Gm Nett Pack)         | 08PRDVKV10124   |
| Prawn: King - BAP - Raw Peeled & Deveined 26-30 (700Gm Nett Pack)         | 08PRDVKV20124A  |
| Prawn: King - BAP - Raw Peeled & Deveined 31-40 (700Gm Nett Pack)         | 08PRDVKV30124   |
| Prawn: King - BAP - Raw Peeled & Deveined 41-50 (700Gm Nett Pack)         | 08PRDVKV40124   |
| Prawn: King - Headless - Shell On & Raw F/Water U5 (700Gm Nett Block)     | 08PRHLB10224    |
| Prawn: King - Headless - Shell On & Raw F/Water 6-8 (700Gm Nett Block)    | 08PRHLB20224    |
| Prawn: King - Headless - Shell On & Raw F/Water 21-25 (800Gm Nett Block)  | 08PRHLB60224    |
| Prawn: King - Headless - Shell On & Raw SeaWater 26-30 (900Gm Nett Block) | 08PRHLBS30224   |
| Prawn: King - Head On - Shell On - Raw 4-6 (600Gm Nett Box)               | 08PRHO4E2R      |
| Prawn: King - Head On - Shell On - Raw 8-12 (600Gm Nett Box)              | 08PRHO30224     |

# SHELLFISH

| DESCRIPTION   | CODE           |
|---|----------------|
| Prawn: King - Head On - Shell On - Raw 13-15 (600Gm Nett Box)                     | 08PRHO40224    |
| Prawn: King - Head On - Shell On - Raw 16-20 (600Gm Nett Box)                     | 08PRHO50224    |
| Prawn: King - Head On - Shell On - Raw 21-30 (600Gm Nett Box)                     | 08PRHO60224    |
| Prawn: King - Head On - Shell On - Raw 31-40 (600Gm Nett Box)                     | 08PRHO70224    |
| Prawn: Sicilian Red - Whole No 1 20-25 (1Kg Nett Tray) <i>*Special order only</i> | 08PRASIHO1E3Q  |
| Prawn: Sicilian Red - Whole No 2 30-35 (1Kg Nett Tray) <i>*Special order only</i> | 08PRASIHO2E3Q  |
| Prawn: Sicilian Red - Whole No 3 50-65 (1Kg Nett Tray) <i>*Special order only</i> | 08PRASIHO3E3Q  |
| Prawn: North Atlantic 100-200 (1.3Kg Nett Bag)                                    | 08PRABULK0203  |
| Prawn: North Atlantic 250-350 (1.16Kg Nett Bag)                                   | 08PRABULK30203 |
| Prawn: North Atlantic 150-250 - Luxury (2.2Kg Nett Bag)                           | 08PRALG02150   |
| Prawn: Carabinero Red U10 (800Gm Nett Weight)                                     | 08PRARC10E0A   |
| Prawn: Royal Greenland 444 175-275 (1.80Kg Nett Bag)                              | 08PRARG17E4I   |
| Prawn: Royal Greenland 446 125-175 (1.80Kg Nett Bag)                              | 08PRARG12E4I   |
| Prawn: Royal Greenland 448 95-125 (1.80Kg Nett Bag)                               | 08PRARG95E4I   |
| Prawn:Argentinian Red Butterfly Marinated 10-20 (500Gm Nett Pack)                 | 08PRARBPW00E2N |
| Prawn:Argentinian Pink 10-20 (2Kg Nett Pack)                                      | 08PRAWA10E4I   |
| Prawn:Argentinian Pink 20-30 (2Kg Nett Pack)                                      | 08PRAWA00E4I   |
| Prawn:Whole - MazzanColle 10-15 (1Kg Nett Pack) <i>*Special order only</i>        | 08PRAMZHO10E3Q |
| Prawn:Whole - MazzanColle 20-30 (1Kg Nett Pack) <i>*Special order only</i>        | 08PRAMZHO20E3Q |
| Prawn:Whole - MazzanColle 30-40 (1Kg Nett Pack) <i>*Special order only</i>        | 08PRAMZHO35E3Q |
| Prawn: Mediterranean Rose 65-75 (1Kg Nett Pack) <i>*Special order only</i>        | 08PRARO65E3Q   |
| Prawn: Mediterranean Rose 90-100 (1Kg Nett Pack) <i>*Special order only</i>       | 08PRARO90E3Q   |
| Prawn: Mediterranean Rose Tartare (80Gm Nett Pack) <i>*Special order only</i>     | 08PRAROT00E0Q  |
| Prawn: Shell On 90-120+-Cooked (5Kg Nett Case)                                    | 08PRASHON10103 |
| Shrimp: Raw - Head On Shell On 30-40 (2Kg Block)                                  | 08SHRHOB30E4I  |

# SHELLFISH

| DESCRIPTION                                     | CODE         |
|---|--------------|
| Oyster: Meat (850Gm Nett Pack)                  | 08OYSM00E3Q  |
| Scallop: King Roe On (550Gm Nett Bag)           | 08SCAKJ00E3Q |
| Scallop: Queen (600Gm Nett Bag)                 | 08SCAQ40E0A  |
| Scallop: Queen - Half Shell (10 Per Bag)        | 08SCAQH00E8D |
| Scallop: Meat - Roeless 10-20 (700Gm Nett Pack) | 08SCARI0E3Q  |
| Shrimp: Brown Peeled (363Gm Nett Pack)          | 08SHRPB00E2K |
| Shrimp: Potted (50Gm Nett Tub)                  | 08SHRPB00E0I |
| Whelks: Meat IQF (1Kg Nett Pack)                | 08WHE00E3Q   |



(Scallops)

# SMOKED

| DESCRIPTION   | CODE          |
|---|---------------|
| Cod: Smoked Roe (Kg)  | 08CODSR00K0A  |
| Haddock: Offcuts Natural Smoked (1Kg Nett Pack)             | 08HADOWR00E3Q |
| Haddock: Fillet - Natural Smoked (3Kg Nett Case)            | 08HADS00E4Y   |
| Haddock: Fillet - Natural Smoked (Kg)                       | 08HADS00K0A   |
| Haddock: Fillet - Smoked - Dyed Yellow (3Kg Nett Case)      | 08HADSY00E4Y  |
| Smokies: Haddock (3.18Kg Nett Case)                         | 08HADA00E4Z   |
| Halibut: Smoked - Sliced (200Gm Nett Pack)                  | 08HALS00EIF   |
| Halibut: Smoked - Sliced Sides (Kg Nett)                    | 08HALS00K0A   |
| Kippers: Fillets (3kg Nett Case)                            | 08KIP00E4Z    |
| Kippers: Manx (3kg Nett Case)                               | 08KIPM00E4V   |
| Kippers: Whole (3Kg Nett Case)                              | 08KIPW00E4Z   |
| Mackerel: Fillet - Smoked - 120/160Gm (18 Packs)            | 08MACS12E8L   |
| Mackerel: Fillet - Smoked - Peppered - 120/160Gm (18 Packs) | 08MACSP12E8L  |
| Tuna: Fillet - Smoked (200Gm Nett Pack)                     | 08TUNS00EIF   |

# CEPHALOPODS

| DESCRIPTION  | CODE         |
|--|--------------|
| Cuttlefish: Whole 1-2Kg (Kg)                       | 08CUT1K0A    |
| Cuttlefish: Baby - Cleaned 41-60 (800Gm Nett Pack) | 08CUTBC41K0A |
| Octopus - Baby 20-40 (800Gm Nett Bag)              | 08OCTB20K0A  |
| Octopus - Baby 41-60 (800Gm Nett Bag)              | 08OCTB41K0A  |
| Octopus: 1-2Kg (Kg)                                | 08OCTP1K0A   |
| Octopus: 2-3Kg (Kg)                                | 08OCTP2K0A   |
| Octopus: 3-4Kg (Kg)                                | 08OCTP3K0A   |

# CEPHALOPODS

---

| DESCRIPTION  | CODE           |
|--|----------------|
| Squid: Baby (454Gm Nett Pack)  | 08SQUB00E2K    |
| Squid: Micro Chipperones (386Gm Nett Pack)                             | 08SQUC00E2N    |
| Squid: Micro Chipperones (800Gm Nett Pack)                             | 08SQUC00E3Q    |
| Squid: Cleaned With Tentacles 10-20 (800Gm Nett Bag)                   | 08SQUCPF10E3Q  |
| Squid: Cleaned With Tentacles 20-40 (800Gm Nett Bag)                   | 08SQUCPF20E3Q  |
| Squid: Whole Cleaned With Tentacles 10-20 Vietnamese (900Gm Nett Pack) | 08SQUCV10E3Q   |
| Squid: Whole Cleaned With Tentacles 20-40 Vietnamese (900Gm Nett Pack) | 08SQUCV20E3Q   |
| Squid: Rings Unbattered (700Gm Nett Bag)                               | 08SQUR00E3Q    |
| Squid: Steak 110-140Gm (800Gm Nett Pack)                               | 08SQUSTPF00E3Q |
| Squid: Tubes U5 (700Gm Nett Bag)                                       | 08SQUT5E3Q     |
| Squid: Whole California 10-14Cm (1Kg Nett Pack)                        | 08SQUWC10E3Q   |

# GAME FISH & EXOTICS

---

| DESCRIPTION                                    | CODE          |
|--|---------------|
| Kingfish: Portion 170-230Gm (4.50Kg Nett Case) | 08KINFST17E5R |
| Mahi-Mahi: Fillet 170-200Gm (900Gm Nett Pack)  | 08MAHI7E3Q    |
| Mahi-Mahi: Portion 160-180Gm (4Kg Nett Case)   | 08MAHP16E5R   |
| Red Snapper: Portion 170-200Gm (20 Per Case)   | 08SNARI7E8N   |
| Red Snapper: Fillet 300-500Gm (Kg)             | 08SNAR30K0A   |
| Swordfish: Supreme 170-220Gm (10 Per Case)     | 08SWOI7E8D    |
| Swordfish: Supreme 220-280Gm (10 Per Case)     | 08SWOL23E8D   |
| Tuna: Loin Supreme 140-170Gm (10 Per Case)     | 08TUNSUI4E8D  |
| Tuna: Loin Supreme 170-200Gm (10 Per Case)     | 08TUNST17E8D  |
| Tuna: Loin Supreme 230-280Gm (10 Per Case)     | 08TUNST23E8D  |
| Yellowtail Kingfish: Hamachi Fillet (Kg)       | 08KINHA00K0A  |
| Yellowtail Kingfish: Hiramasa Fillet (Kg)      | 08KINH100K0A  |



# OTHER FISH

| DESCRIPTION  | CODE           |
|--|----------------|
| Anchovies 1Kg Nett Pack (Each)   | 08ANCO0E3Q     |
| Barramundi: Fillets 500-800Gm (Kg)                                       | 08BAR50K0A     |
| Herring: Milts (2.27Kg Nett Pack)  | 08HERM00E4L    |
| John Dory: Fillet 115-170Gm (900Gm Nett Pack) <i>*Special order only</i> | 08JOHI1E3Q     |
| Monkfish: Fillet IQF (800Gm Nett Pack)                                   | 08MON00E3Q     |
| Monkfish: Fillet 400-600Gm Stargazer (5Kg Nett Box)                      | 08MONST40E5R   |
| Pie Mix: Whitefish - Skinless & Boneless (Kg)                            | 08MIXP00K0A    |
| Red Mullet: Whole U5 (900Gm Nett)  | 08MULR5K0A     |
| Red Mullet: Whole U7 (900Gm Nett)  | 08MULR7K0A     |
| Red Mullet: Fillets 40-80Gm (800Gm Nett Bag)                             | 08MULR40E3Q    |
| Red Mullet: Fillets 80-120Gm (800Gm Nett Bag)                            | 08MULR80E3Q    |
| Salmon: Supreme 140/170Gm - Descaled Boneless - Vac Pack (20 Per Case)   | 08SALA140E8D   |
| Salmon: Supreme 170/200Gm - Descaled Boneless - Vac Pack (20 Per Case)   | 08SALSUA17E0A  |
| Salmon: Pieces Skinned & Boned (1Kg Nett Pack)                           | 08SALPA00E3Q   |
| Sardine: Fillet (850Gm Nett Bag)   | 08SAR00E3Q     |
| Sardine: Whole (900Gm Nett Bag)  | 08SARW00E3Q    |
| Tilapia: Fillet 140-200Gm (800Gm Nett Bag)                               | 08TILR14E3Q    |
| Whitebait: IQF Paramount (454Gm Nett Pack)                               | 08WHIBAPA00E2K |

# MISCELLANEOUS

| DESCRIPTION                           | CODE         |
|---------------------------------------|--------------|
| Frogs Legs (1Kg Nett Pack)            | 08FRO00E3Q   |
| Seafood Cocktail (800Gm Nett Bag)     | 08SEAC00E3Q  |
| Snails In Garlic (12 Snails Per Tray) | 08SNAGA00E8F |

# CERTIFIED PRODUCTS

---

## MSC

The Marine Stewardship Council (MSC) meets best practice guidelines for eco-labeling and certification to ensure it offers the world's leading certification program for sustainable wild-capture seafood. By choosing our bluefish labelled products you can be sure it comes from a sustainable fishery that has met the MSC's, Fisheries Standard.

| DESCRIPTION   | CODE          |
|---|---------------|
| MSC-Cod: Loin 170-200Gm Skinless & Boneless (10 Per Case)       | 16CODLAS17E8D |
| MSC-Cod: Tail 140-170Gm (25 Per Case)                           | 16CODTA14E8R  |
| MSC-Cod: Tail 170-200Gm (20 Per Case)                           | 16CODTA17E8N  |
| MSC-Cod: Tail 140-170Gm Skinless & Boneless (25 Per Case)       | 16CODTAS14E8R |
| MSC-Cod: Tail 170-200Gm Skinless & Boneless (20 Per Case)       | 16CODTAS17E8N |
| MSC-Cod: Tail 170-200Gm Skinned & Boned (25 Per Case)           | 16CODTAS17E8R |
| MSC-Cod: Tail 200-230Gm Skinned & Boned (20 Per Case)           | 16CODTAS20E8N |
| MSC-Haddock: IQF 170-200Gm (20 Per Case)                        | 16HAD17E8N    |
| MSC-Haddock: IQF 200-230Gm Skinless (18 Per Case)               | 16HADS20E8L   |
| MSC-Haddock: IQF 280-340Gm Skinless (12 Per Case)               | 16HADS28E8L   |
| MSC-Haddock: Tail 140-170Gm Skin On & Boneless (25 Per Case)    | 16HADT14E8R   |
| MSC-Haddock: Tail 140-170Gm Skinless & Boneless (25 Per Case)   | 16HADTS14E8R  |
| MSC-Haddock: Tail 170-200Gm Skinless & Boneless (20 Per Case)   | 16HADTS17E8N  |
| MSC-Hake: Fillet Skinned & Boneless 140-170Gm (25 Per Case)     | 16HAKS14E8R   |
| MSC-Hake: Fillet Skinned & Boneless 170-200Gm (20 Per Case)     | 16HAKS17E8N   |
| MSC-Hoki: Fillet - Skinned & Boned 110-170Gm (3.63Kg Nett Case) | 16HOKI1E5M    |
| MSC-Hoki: Fillet - Skinned & Boned 170-230Gm (3.63Gm Nett Case) | 16HOKI17E5M   |
| MSC-Pollock: Fillet 110-140Gm (30 Per Pack)                     | 16POLSI1E5R   |
| MSC-Pollock: Fillet 140-170Gm (25 Per Pack)                     | 16POLSI4E8R   |
| MSC-Pollock: Fillet 170-200Gm (20 Per Pack)                     | 16POLSI7E8N   |
| MSC-Pollock: Fillet 230-280Gm (15 Per Pack)                     | 16POLS23E8I   |

# CERTIFIED PRODUCTS

---

| DESCRIPTION  | CODE           |
|--|----------------|
| MSC-Prawn: Single Frozen 125-175 - Ocean Catch (1.80Kg Nett Bag) | I6PRARGMS12E4I |
| MSC-Prawn: Single Frozen 175-275 - Ocean Catch (1.80Kg Nett Bag) | I6PRARGMS17E4I |
| MSC-Prawn: Royal Greenland 444 175-275 (1.80Kg Nett Bag)         | I6PRARGI7E4I   |
| MSC-Prawn: Royal Greenland 446 125-175 (1.80Kg Nett Bag)         | I6PRARGI2E4I   |
| MSC-Prawn: Royal Greenland 448 95-125 (1.80Kg Nett Bag)          | I6PRARG95E4I   |
| MSC-Sardine:Whole (900Gm Nett Bag)                               | I6SARW00E3Q    |
| MSC-Scallop: Meat - Roeless 10-20 (700Gm Nett Pack)              | I6SCACLI0E3Q   |
| MSC-Scallop: Meat - Roeless Luxury - 10-20 (900Gm Nett Pack)     | I6SCACL20E3Q   |

## ASC

The Aquaculture Stewardship Council (ASC) operates a certification and labelling program based around scientifically robust and globally credible standards that assess whether fish farms are operating responsibly. Seafood products that carry the ASC logo are fully traceable to farms that have been independently certified to the ASC standard via Chain of Custody certification. We are working with the Aquaculture Stewardship Council (ASC) to list many more ASC certified lines over the coming months.

| DESCRIPTION  | CODE        |
|--|-------------|
| ASC-Pangasius: Fillet 140-170Gm (800Gm Nett Pack)            | I9PANI4E3Q  |
| ASC-Pangasius: Fillet 180-220Gm (800Gm Nett Pack)            | I9PANI8E3Q  |
| ASC-Prawn: King - Head On - Shell On 20-30 (600Gm Nett Pack) | I9PRHO20E2R |




## Get In Touch

Whatever your preferred method of contact, we are here to help.

**Tel: 0207 358 1617**

**Email: [sales@directseafoodslondon.co.uk](mailto:sales@directseafoodslondon.co.uk)**

 [directseafoodslondon](https://www.instagram.com/directseafoodslondon)  [@seafoodlondon](https://twitter.com/seafoodlondon)

Manage your account online and try our new  FreshFoodHub App.  
Please click on the website link to register.

[www.directseafoodslondon.co.uk](http://www.directseafoodslondon.co.uk)

